



Photo by Aqua Cat



Photo by REEF

## 2016 FIELD SURVEY TRIP PROGRAM

*Dive Vacations That Count*

For the past two decades, REEF volunteer surveyors have compiled the largest fish sighting database in the world, led the way in lionfish invasion intervention, and pioneered research for the preservation of Nassau Grouper populations. REEF Trips are led by marine life experts. Join like-minded divers for an itinerary of diving, seminars, and fun!

### Philippines

#### Atlantis Dumaguete Resort and *Atlantis Azores* Liveboard

Led by Christy Pattengill-Semmens, Ph.D., REEF Director of Science and Dr. Brice Semmens, Coral Reef Expert

*The Philippines -- an exciting new adventure for REEF travelers! Join us for our inaugural trip to explore this diverse region of the Central Indo-Pacific. The area is known for some of the most interesting and beautiful fish and critters to add to your life list, including ghost pipefish, mandarinfish, pygmy seahorses, flamboyant cuttlefish, and much more. The Philippines archipelago is home to more than 3,000 species of fish, and the dive sites combine unbelievable muck-diving with pristine coral reefs and shoals of schooling fish. The diving, accommodations, and amenities are all sure to make for a once in a lifetime adventure - sign up early to secure your space!*

#### Atlantis Dumaguete Resort Package:

**April 9-16, 2016**

\$1,828 if booked by June 1, 2015  
(\$1,928 if booked after)

#### Land and Sea Combination Package:

**April 9-23, 2016**

\$5,523 if booked before June 1, 2015  
(\$5,823 if booked after)

#### Atlantis Azores Liveboard Package:

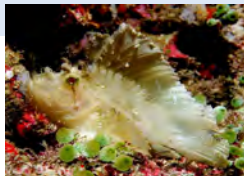
**April 16-23, 2016**

\$3,695 if booked by June 1, 2015  
(\$3,895 if booked after)

The all-inclusive resort features first class accommodations and an on-site restaurant, spa, camera room, and five star PADI dive operation. Includes accommodations in a deluxe room based on double occupancy, unlimited scheduled boat dives (up to 5 dives per day, including night diving), all meals at Toko's Restaurant, unlimited internet access, and day trip to Apo Island (or similar location).

Combination package includes all items on both trips. On April 16th, participants will transfer from Dumaguete to Manila, then to Puerto Princesa, in order to board the *Atlantis Azores* liveboard.

Includes double occupancy twin share accommodations, all diving (up to 4 dives a day), all meals and snacks on board, local soft drinks, beer and wine. This trip will venture to the isolated (accessible only by boat) Tubbataha Reefs Natural Marine Park, which features incredible biodiversity, and megafauna such as sharks and manta rays.



### Reef Environmental Education Foundation

Explore. Discover. Make a Difference.

(305) 588-5869 [trips@REEF.org](mailto:trips@REEF.org) [www.REEF.org/trips](http://www.REEF.org/trips)

Prices do not include an additional REEF Program fee and additional costs such as transfers, nitrox, tips, etc. All prices are per person based on double occupancy, single occupancy rates available upon request. Visit [www.REEF.org/trips](http://www.REEF.org/trips) for further details.

**Any liabilities for trip interruptions, cancellations, or general travel disputes will be the responsibility of the traveler.**